



Building Excellence.



NEENAH
HIGH SCHOOL

NJSD New High School

Miron Project Number 210210

Monthly Project Progress Report June 2022

Table of Contents

- Executive Summary
- Action Items
- Design Items
- Quality
- Schedule
- Risk Management
- Progress Photos
- Glossary of Terms

In this issue...

- Slab on Grade Pours
- Geothermal Well Drilling
- Structural Steel & Masonry
- Interior Steel Studs
- MEP Rough-Ins
- Sitework on Athletic Fields
- Bleachers & Pressbox Install



Distribution List

Dr. Mary Pfeiffer
District Superintendent
Neenah Joint School District
mpfeiffer@neenah.k12.wi.us
920-751-6800 x 10100

Tim Kippenhan
Vice President & COO
Miron Construction Co., Inc.
Tim.kippenhan@miron-
construction.com
920-969-7053

Matt Wolfert
President
Bray Architects
mwolfert@brayarch.com
414-226-0200

Amanda Manteufel
Project Executive
Miron Construction Co., Inc.
Amanda.manteufel@miron-
construction.com
920-328-1777

Ryan Sands
Vice President
Bray Architects
rsands@brayarch.com
414-290-1981

Michael Huffman
President
Huffman Facility Development
Mhuffman@huffmanfd.com
608-332-4112

Our *commitment* reaches beyond construction;
our *passion* brings *dreams* to life.

Executive Summary

Site Activities

- Storm piping install was completed
- Football concession stand slab on grade (SOG) was completed and masonry started
- Concrete footings and foundations started for the maintenance building
- SOG concrete pours continued throughout the building
- Exterior wall studs and sheathing finished in the classroom wings
- Interior wall studs in the classroom wings finished on the second floor and continued on the first floor
- Underground MEP's (Mechanical, Electrical, Plumbing) in the North classroom wings finished
- MEP rough-ins continued in the classroom wings
- Roofing completed in the classroom wings and started on the auditorium and auxiliary gym
- Exterior brick continued on the classroom wings
- Structural steel and metal roof deck is being set in the receiving area and admin spaces
- Catwalk steel above the auditorium stage was installed
- Masonry walls in the music wing continue and started in the lab spaces
- Geothermal well drilling continues with two drill rigs on site
- The geothermal vault was set in place and manifolding of the geothermal piping field started
- The track was brought to sub-grade and the concrete curb around it was installed
- Concession stand SOG was completed and masonry walls started
- Site grading of the athletic fields continued
- Athletic equipment install started on the football field
- Grandstand bleacher and pressbox install was completed

Major Milestones / Accomplishments

- Geothermal vault was set in place
- Exterior site building construction started
- HVAC units started to be delivered

Upcoming Milestones

- Larsen Road work will start early July
- Delivery of remaining HVAC units
- Competition gym SOG floor pour (230 cubic yards)

Key Issues and Concerns

- Material availability and increasing lead times

We exist to create...

Relationships

...built on honesty and integrity, with clients, partners, and employees.
At Miron, people come first.



Action Items

Key Accomplishments

- Roofing on North classroom wings was completed
- Geothermal vault was set in place
- North & South Concessions construction started
- Grandstand bleachers and pressbox were completed

Areas of Concern

- Material availability
- Material cost increases
- Submittal review times

Action Item List

- Continue to monitor material lead times and material delivery dates
- Monitoring a 60 week lead time for electrical switchgear
- MEP contractors involved in BIM must continue to maintain the coordination schedule so work can be coordinated with other subcontractors

We exist to fulfill...

Dreams

...and assist our clients in turning their visions into realities.



Design Items

Areas of Concern

- Critical to continue to complete submittal revisions and respond to RFI's to maintain project schedule

Submittals

- Submittals from Bid Package 01 contractors are being received and reviewed
100% of submittals have been submitted and reviewed
- Submittals from Bid Package 2A, 2B, and 2C contractors are being received and reviewed
100% of submittals have been submitted and reviewed
- Submittals from Bid Package 3A contractors are being received and reviewed
100% of submittals have been submitted and reviewed
- Submittals from Bid Package 3B contractors are being received and reviewed
100% of submittals have been submitted and reviewed
- Submittals from Bid Package 04 contractors are being received and reviewed
95% of submittals have been submitted and reviewed
- Submittals from Bid Package 05 contractors are being received and reviewed
80% of submittals have been submitted and reviewed

Requests for Information

- 51 RFI's were generated this month and 43 have been answered and returned
- 8 open RFI's that the design team will return in early July

We exist to promote...

Innovation

...and be the leader in providing and utilizing the best tools, processes, and safety measures.



Quality

Inspections

- Fox Crossing Utility
- Compaction Testing
- Concrete Testing
- Rebar Inspection
- Bearing Capacity
- Structural Steel Testing
- MEP Underground Testing
- State & Local Building Inspections

Test Results

- Concrete test reports are being received as areas are poured
- Geothermal well testing as each well is drilled
- Soil compaction reports are being received as areas are backfilled with onsite material

Quality Issues & Resolution

- None

We exist to develop...

Solutions

...that exceed the needs and requirements of our clients, partners, and employees.

Schedule Summary

Schedule Update

Labor Force Report

Veit - averaging 10 workers each day working on earthwork and installing storm sewer piping
Miron Concrete - 20 workers setting forms and pouring concrete footings and foundations
Miron Steel - 17 workers erecting steel in the classroom wings and precast in the auditorium
Miron General Trades - 8 workers each day working on window and roof blocking
Miron Masonry - 26 workers laying structural block in various areas of the building
ECS Midwest - 1 worker testing concrete ensuring it meets the specification
Wisconsin Rebar - 2 workers tying and setting concrete reinforcing steel
Bertram Drilling - 6 workers drilling for the geothermal field
GO Loop - 5 workers starting to lay pipe and connect geothermal wells
Appleton Lathing Corporation - 26 workers starting exterior steel stud framing
Tweet Garot - 15 workers installing MEP underground utilities in classroom wings
Hurckman Mechanical - 14 workers installing HVAC equipment and rough-ins
EC&D - 3 workers installing low voltage rough-ins
Van Ert - 16 electricians working on masonry in wall electrical
Up-Right - 4 workers installing light pole bases and underground electrical
Crafts Roofing - 7 roofers working on roofing throughout the building
Hein Masonry - 8 masons laying brick on the classroom wings
JWI - 10 workers installing the football field bleachers
Walsh Masonry - 6 masons laying block for the concession stands
Peterson Co - 3 workers installing exterior athletic equipment
Martell Construction - 4 workers pouring concrete around the site

Delays

- Weather
 - 2 weather days in June

- Materials & Labor
 - Currently None

- Design
 - Currently None

- Owner
 - Currently None

Key Issues / Concerns / Recommended Action Steps

- Reviewing and answering Submittals & RFI's in order to maintain schedule
- Continuing to monitor material lead times
- Tracking weather days to determine any schedule impact

We exist to serve each...

Community

...in which we live and work, giving back whenever and wherever we can.

Risk Management

Key Safety Statements & Focus Issues

- 766 team members have been orientated to date
- Approximately 200-225 people on-site per-day
- Orientations and background checks completed before being permitted to work on site
- Stretching and safety meeting is daily at 6:00 AM & 7:00 AM with all contractors
- Weekly site-wide stand-down safety meeting
- Daily site safety audits and weekly contractor safety walks
- Safety focus is on rigging and signaling on site
- Heavy equipment includes: 7 cranes, 12 skytraks, 2 dump trucks, 1 front end loader, 4 back hoes, 1 roller, 1 dozer, 2 offroad haul trucks, 14 forklifts, 6 cranes, 11 UTV's, and 28 company vehicles
- Communication is key to the team's success with the amount of equipment moving on site
- Site traffic control is in place due to lots of moving equipment and vehicles on site
- Excavations for concrete footings and foundations are barricaded when no work is being put in place
- Red danger tape is put up in areas where overhead work and limited access zones are located
- Masonry walls are braced as erected and red danger tape is being used in limited access zones



Progress Photographs



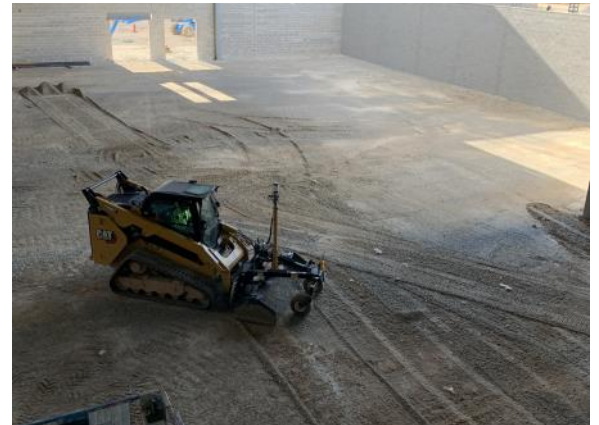
Geothermal vault is set in place
(06/03/2022)



Catwalk steel in auditorium
(06/03/2022)



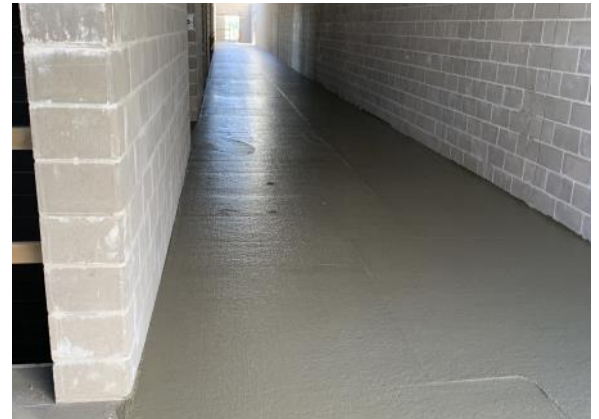
Concrete teams preps for the floor pour in the South concession stand
(06/14/2022)



Laser grader attached to a skid steer is used to final grade the gym floor prior to concrete
(06/21/2022)



The North concession stand is prepped and ready for concrete
(06/22/2022)



Fresh concrete floor in hallway adjacent to the competition gym
(06/22/2022)

Progress Photographs



Wrestling room floor is prepped to receive concrete
(06/28/2022)



Press box gets set on the grandstand bleachers
(06/29/2022)



Wrestling room concrete pour
(06/29/2022)



Admin office area steel getting set in place
(06/30/2022)



Future main entrance of the building looking West
(06/30/2022)

Glossary of Terms

- **Bid Package (BP):** a set of documents that contains drawings, specifications, and scopes of work for a specific set of construction activities that are sent out to contractors for competitive bidding. Ex: Bid Package 01 contained all the drawings, specifications, and scopes for the exterior site portion of work on the project.
- **Request for Information (RFI):** a document during the construction phase of a project used to get clarification on the project documents between the contractor and the architect/engineer. Ex: The contractor submits an RFI to the architect about a missing dimension on the drawings.
- **Submittal:** documents such as shop drawings, product data, material data, and samples to confirm that the correct products will be installed on the project. Ex: The flooring contractor submits a sample of the carpet they plan to install to ensure it is the correct color.
- **Compaction Report:** a report generated by an engineer noting how dense the ground is in a certain location. Ex: The soil below a road is tested to ensure the soil is firm enough to handle the weight of cars driving over it.
- **Concrete Masonry Unit (CMU):** usually a rectangular prism shaped structural member that is cast or extruded and are comprised of designed aggregates, cement, and water. Ex: The most common occurrence of CMU units are in stairwells of a commercial building. They look like legos stacked on top of one another.
- **Building Information Modeling (BIM):** the process of identifying and resolving constructability issues using 3D models developed by the design team and subcontractors. 3D models are overlaid, conflicts are identified, model adjustments are made, and installation drawings are produced which allow field teams to accurately install their systems to match the final coordinated 3D model.
- **Precast Concrete Wall Panel:** a structural piece of concrete that is cast offsite at a production facility to specific dimensions in a mold, cured for a duration of time, and set in a final location. Precast panels can be used in lieu of a masonry wall, concrete block wall, or steel stud wall. The new high school will have precast wall panels in the auditorium and the auxiliary gym.
- **Slab on Deck (SOD):** a concrete slab that is poured on top of metal decking at an elevated location such as a second or third floor of a building. Together the metal deck and concrete slab make up the floor structure of the building.
- **Slab on Grade (SOG):** a concrete slab that is poured at the ground elevation of the building. This type of slab is poured directly on a compacted stone base.

We exist to develop...

Solutions

...that exceed the needs and requirements of our clients, partners, and employees.